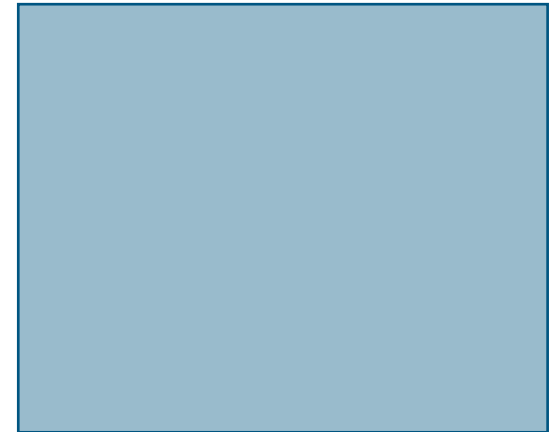
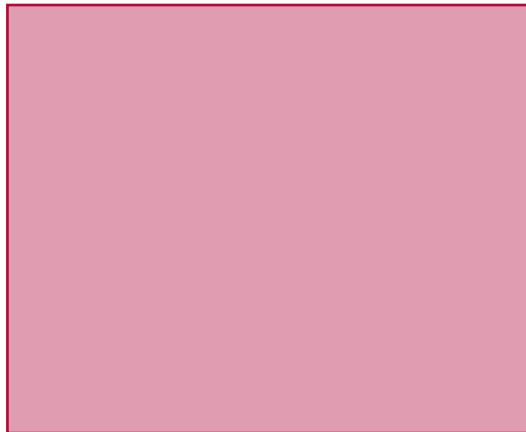
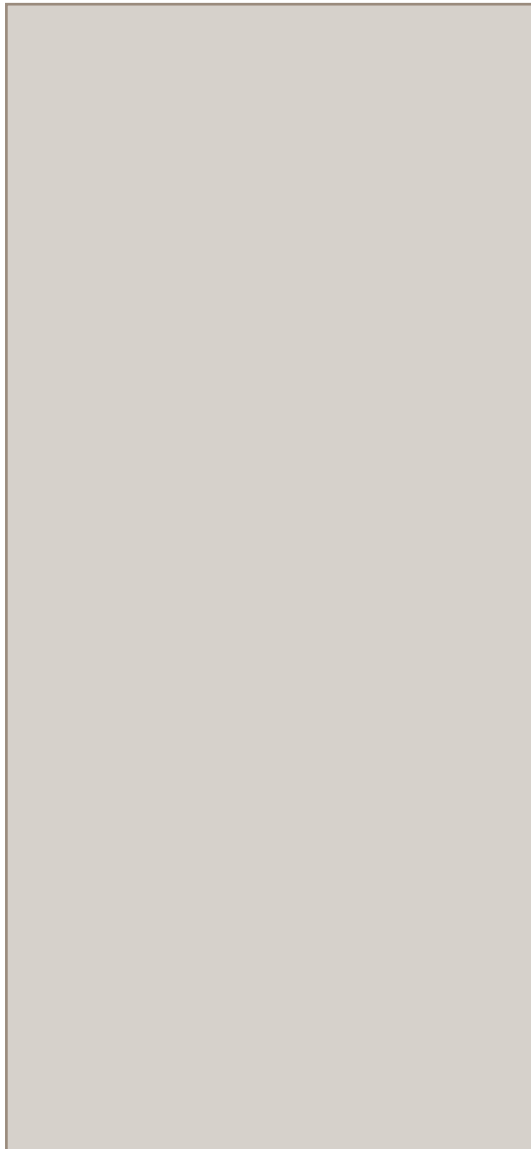


Michael Carmody
CEO



Australian Government
**Australian Customs and
Border Protection Service**

CUSTOMS AND BORDER PROTECTION SERVICE
ORGANISATION CHART
EFFECTIVE FROM 16 AUGUST 2010

Mike Pezzullo
COO
Corporate Operations Program Executive

EXECUTIVE



EXECUTIVE

Peter White
Regional Director
International Maritime
People Smuggling

Terry Price
NM
Maritime Operations
Support

Demetrio Veteri
Deputy Commander
Border Protection
Command

Andrew Redman A/g
NM
Enforcement
Operations

Ian Laverock
NM
Acquisitions

CDRE David Gwyther
Deputy Commander
Joint Task Force 639

Kingsley Woodford-Smith
NM
Investigations

Nic Arthur A/g
NM
Maritime Capability
Development

Sharon Nyakuengama
NM
Technology and
Enforcement Capability

Neil Mann
DCEO
Passenger & Trade Facilitation

EXECUTIVE

Michelle Kinnane
NM
SmartGate

Dave Leonard
NM
Strategic Development
(Cargo)

Geoff Johannes
NM
Trade Measures

Chris Wall
NM
Business Capability

Martin Fisk
NM
Business Intelligence
Taskforce

Sarah Major
NM
Trade Policy &
Regulation

Terry Wall
NM
Passenger Operations

Robyn Miller
NM
Client Engagement &
Cargo Systems

Anthony Seebach
NM
Trade Services

Gayle Brown
NM
Airport Operations
North

Duane Stokes A/g
NM
Cargo Business
Improvement and Support

Craig Sommerville
NM
Compliance Assurance

Joan O'Reilly
NM
Airport Operations
South

Catherine Asbridge
NM
Air Cargo and Detained
Goods

Tim Patmore A/g
NM
Strategic Development

Graham Krisohos
NM
Sea Cargo and
International Mail

CHIEF FINANCE OFFICER

Deputy Chief Finance Officer

Provide policies, practices and advice supporting the effective and efficient allocation of resources across the organisation and ensure finances are managed in accordance with legislative requirements and guidelines.

CHIEF INFORMATION OFFICER

EXECUTIVE

**NM
Client and Program
Managed Services**

Provides the IT Service Desk, Business Engagement, IT Contracts Management, IT Project Management, and review of ICT activities. A single entry point for business to access services provided by the Division.

**NM
Business Solutions**

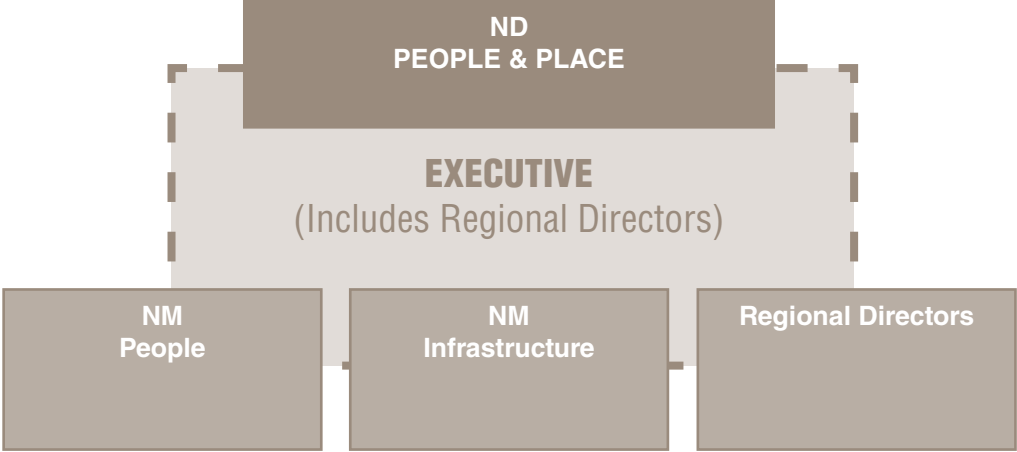
Responsible for the design, development, implementation and maintenance of the ICT solutions used by Customs and Border Protection's business.

**NM
IT Service Delivery**

Provides service support and operational support and maintenance to maximise availability of ICT services.

**NM
IT Strategy, Architecture
and Security**

Provides architectural frameworks, security governance and communication channels to maximise efficiency in the ICT environment, as well as advice on planning, design, development and implementation of secured ICT services for the future.



Develop and implement policies and practices for the efficient and effective delivery and management of human resources and, in conjunction with business lines, the development and delivery of training and skills development programs.

Manage and co-ordinate all aspects of infrastructure and property requirements to ensure effective and efficient delivery of the organisation's operations.

**ND
INTELLIGENCE & TARGETING**

INTELLIGENCE & TARGETING EXECUTIVE

**NM
Intelligence**

Collect, analyse and disseminate information that allows Customs and Border Protection to understand its environment and identify key issues and trends that support translation into operational outcomes via targeting or enforcement activities.

**NM
Targeting**

Develop and manage a national targeting strategy that focuses Customs and Border Protection's interventions on high risk cases.

**NM
Maritime People
Smuggling Intelligence**

Provide support to whole-of-government maritime people smuggling processes through providing high quality intelligence to support maritime people smuggling policy and operational objectives.

ND
LAW ENFORCEMENT STRATEGY

Develop and evaluate the effectiveness of whole-of-Customs and Border Protection approaches to managing designated enforcement priority areas including drugs and counter terrorism.

NM
CORPORATE & INTERNATIONAL
STRATEGY

Design and manage the Customs and Border Protection corporate planning, business continuity and risk management. Provide efficient Parliamentary and Executive services. Develop, coordinate and deliver Customs and Border Protection international engagement strategy.

NM DESIGN BRANCH

Work with major Customs and Border Protection change initiatives to achieve the right strategic intent, business outcomes and client experiences; and ensure efficient and effective design processes and project management approaches are both available and being adopted across the organisation.

NM
LEGAL SERVICES BRANCH

Provide high quality in house legal advice in relation to Customs and Border Protection legalisation and other legal and compliance matters. Manage the legislation program and operational delegations. Coordinate Freedom of Information, Privacy and Secrecy matters. Provide representation in Administrative Appeals Tribunal matters and manage the provision of legal services by a panel of external legal service providers.

**ND
MARITIME OPERATIONS SUPPORT**

EXECUTIVE

**NM
Maritime Operations
Support**

Deliver the Customs and Border Protection aviation and marine capability, operational infrastructure and appropriately skilled people that underpins operations to protect Australia's national interests in our maritime domain.

**NM Maritime
Capability Development**

Identify infrastructure and capability required to operate in the future maritime environment and also develop and deliver the operational support and command information systems required for management of civil maritime security threats in the Australian maritime environment.

**NM
Maritime Acquisitions**

Undertake and/or oversight the acquisition and entry into service of the vessels that Maritime Operations Support Branch provides to Border Protection Command and Enforcement & Investigations.

**ND
ENFORCEMENT & INVESTIGATIONS**

ENFORCEMENT EXECUTIVE

**Regional Director
International Maritime
People Smuggling**

The International Maritime People Smuggling Branch, headed by the Regional Director positioned in Jakarta, Indonesia, is responsible for countering, and responding to the international elements of the maritime people smuggling threat to Australia. This is primarily achieved through coordinating the international operational response by Australian Government agencies.

**NM
Enforcement
Operations**

Develop and implement enforcement policy and response capability and manage enforcement operations including processing of illegal foreign fishers.

**NM
Technology and
Enforcement Capability**

Identify, evaluate, deploy and maintain advanced detection and operational support technology and deliver national operational training and development.

**NM
Investigations**

Establish investigations policies and priorities, conduct investigations (including joint investigations).

**COMMANDER
BORDER PROTECTION COMMAND**

**DEPUTY COMMANDER
Border Protection
Command**

Control and co-ordinate civil maritime surveillance and on water response to incursions into Australia's Exclusive Economic Zone.

**DEPUTY COMMANDER
Joint Task Force 639**

Plan and control Australian Defence Force ships, aircraft and land support to civil maritime security operations.

**ND
PASSENGERS**

PASSENGERS EXECUTIVE

**NM
Business Capability**

As a strategic business partner, Business Capability aims to comprehensively lead and integrate activities that enhance business capability for Passengers Division.

**NM
Passenger Operations**

Provide operational policies and practices for the efficient and effective management of passenger processing that supports legitimate travel while preventing the illegal movement of people and goods across the border.

**NM
Airport Operations
North**

Sydney
Brisbane
Cairns
Darwin
Gold Coast

Ensure efficient and effective airport operations in accordance with Passenger Operations policies and objectives, including implementation of agreed outcomes of the recent review and Passengers Taskforce.

**NM
Airport Operations
South**

Melbourne
Adelaide
Perth

**NM
Strategic Development
(Passengers)**

Enhance Customs and Border Protection's passenger processing capability through the co-design of future directions and implementation of initiatives necessary to make them a reality.

**ND
CARGO**

CARGO EXECUTIVE

**NM
Cargo Business
Improvement and
Support**

Provide operational policies and practices for the efficient and effective management of cargo processing that supports legitimate trade while preventing the illegal movement of goods across the border.

**NM
Air Cargo and Detained
Goods**

**NM
Sea Cargo and
International Mail**

Ensure efficient and effective cargo operations in accordance with Cargo Operations policies, practices and objectives.

**NM
Client Engagement and
Cargo Systems**

Develop and operate mechanisms for industry engagement in the design and delivery of Customs and Border Protection's cargo operations, development initiatives and support services (including CI&SC).

**NM
Strategic Development
(Cargo)**

Enhance Customs cargo processing capability through the co-design of future directions and implementation of initiatives necessary to make them a reality.

**ND
TRADE & COMPLIANCE**

TRADE & COMPLIANCE EXECUTIVE

**NM
Trade Services**

Implement and operate industry assistance schemes and Customs and Border Protection aspects of multilateral and bilateral trade agreements.

**NM
Trade Policy &
Regulation**

Manage permit regimes and work with policy agencies, and industry and community stakeholders to ensure desired policy outcomes are delivered in an effective and practical way.

**NM
Trade Measures**

Conduct anti-dumping and countervailing (subsidy) investigations and provide associated advisory services to industry stakeholders.

**NM
Compliance Assurance**

Design and management of the Customs and Border Protection's Cargo Compliance Program of post transactional audits and real time interventions to support accurate and timely reporting and payment of revenue.