

# Australian Customs Service

## Outbound Passenger Experience Snapshot

### October 2010

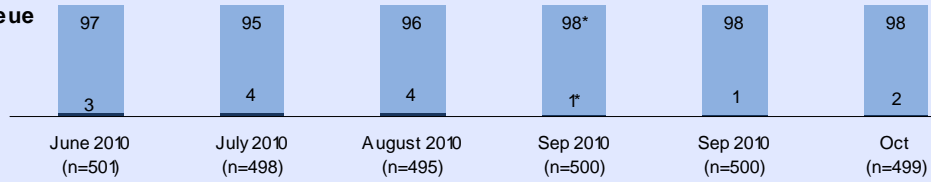
The Australian Customs Service commissions on average 1,000 interviews per month: 500 inbound and 500 outbound. Face to face intercept interviews are conducted within a ten day period each month at each of the following international airports in Australia: Sydney, Melbourne, Brisbane, Perth, Adelaide, Darwin, Gold Coast, and Cairns.

Interviews are conducted immediately after passengers have proceeded through Passport Control.

#### Queue times: Outbound passengers

##### Waiting time in the passport control queue

- 10 minutes or less
- More than 10 minutes



\* Significantly different at 95% confidence

##### Was this waiting time...

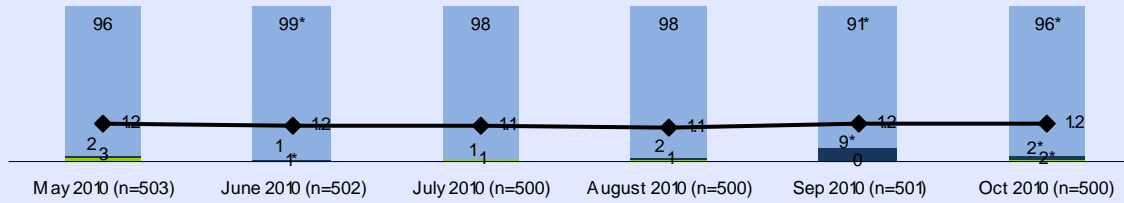
	June 2010	July 2010	August 2010	Sep 2010	Sep 2010	Oct
n=	501	498	495	500	500	499
Far too long	0%	1%	0%	0%	0%	1%
A little too long	1%	3%	2%	1%	1%	3%
Acceptable	98%	96%	97%	99%	99%	96%
Don't know/Refused	0%	0%	0%	0%	0%	0%

XX significantly different at 95% confidence

#### Overall satisfaction with service: Outbound passengers

##### Overall Satisfaction with service encountered from Customs staff who checked passport

- Satisfied
- Neither
- Dissatisfied
- ◆ Mean



Q6 scale: 1=Very satisfied to 5=Very dissatisfied  
Lower mean score equals higher satisfaction

#### Positive aspects of passport control

	May 2010	June 2010	July 2010	August 2010	Sep 2010	Oct 2010
n=	503	502	500	500	501	500
Helpful / Good advice	7%	7%	8%	8%	8%	9%
Courteous / Polite	15%	19%	28%	23%	36%	30%
Efficient / Prompt / Quick	52%	47%	59%	49%	63%	48%
Friendly / Welcoming	36%	35%	33%	41%	36%	37%
Funny / Amusing	1%	2%	0%	0%	1%	1%
Other	2%	3%	4%	3%	1%	1%
Nothing	9%	10%	7%	9%	4%	10%
Don't know	1%	3%	1%	2%	1%	2%
Refused	0%	0%	0%	0%	0%	0%

#### Negative aspects of passport control

	May 2010	June 2010	July 2010	August 2010	Sep 2010	Oct 2010
n=	500	503	502	500	500	501
Not helpful	0%	0%	0%	0%	0%	0%
Discourteous / Rude / Abrupt / Disrespectful / Cold / Suspicious	3%	7%	6%	5%	5%	9%
Slow / The queuing time not efficient	0%	1%	1%	2%	1%	1%
Problem(s) with technology	0%	0%	1%	0%	0%	0%
Problem with other passenger(s)	0%	0%	0%	0%	0%	0%
Other	0%	2%	2%	2%	2%	0%
Nothing	96%	90%	90%	91%	92%	90%
Don't know	0%	0%	0%	0%	1%	0%
Refused	0%	0%	0%	0%	0%	0%